

Steam-JOHNNY

Ang-JANNE

THE MIGHTY CHALLENGER

FEATURES

- Simple to use - propane fired.
- Takes 8 minutes to produce 100 PSI of steam.
- Easy to handle - weights only 110 lbs.
- Easy to transport.
- High pressure allows use of up to 300 feet of hose.
- Dimensions: 35" x 14.5" x 20" (Length x Width x Height).
- Has its own hand pump to replenish water in the pressure vessel.
- Long life expectancy with low maintenance.

ACCESSORIES

- Standard steam hose in 3/8" ID and can be supplied in lengths to suit individual needs.
- Stainless steel special hose is available in 8mm ID. Nozzle diameter is 11mm OD.
- Teflon hose interwoven with stainless steel, providing a smooth surface and suitable stiffness.
- Intended for thawing slender pipes.
- Supplied with pressed hose couplings for boiler and nozzle respectively. Standard lengths 50ft or 80ft.

MANUFACTURER

Manufactured in Sweden

North American importer for the Steam Johnny.
Mckay Water Works Supply Ltd.
9753 - 54 Avenue,
Edmonton, Alberta
T6E 5J4

E-mail: mckayww@telusplanet.net
Phone: 780-461-7133
Fax: 780-438-3590

Steam Johnny is a propane gas-fired high pressure steam boiler for thawing road culverts and drains, water supply and sewer pipes, gutters and rainwater pipes, hardening of concrete, steaming of tanks, sterilization, heating of PVC pipes and many more uses.



Steam Johnny has been in continuous production since 1954 and is well known to municipal street, road and pipe network authorities, forestry industries, fire brigades, the Swedish Road administration, the Swedish State Railways, pipe manufacturing companies and all people engaged in rock blasting during the winter months.

The present model is the result of many years of development and is extremely reliable. There have been over 5,000 steamers built. With reasonable care the Steam Johnny will give many years of trouble-free service.

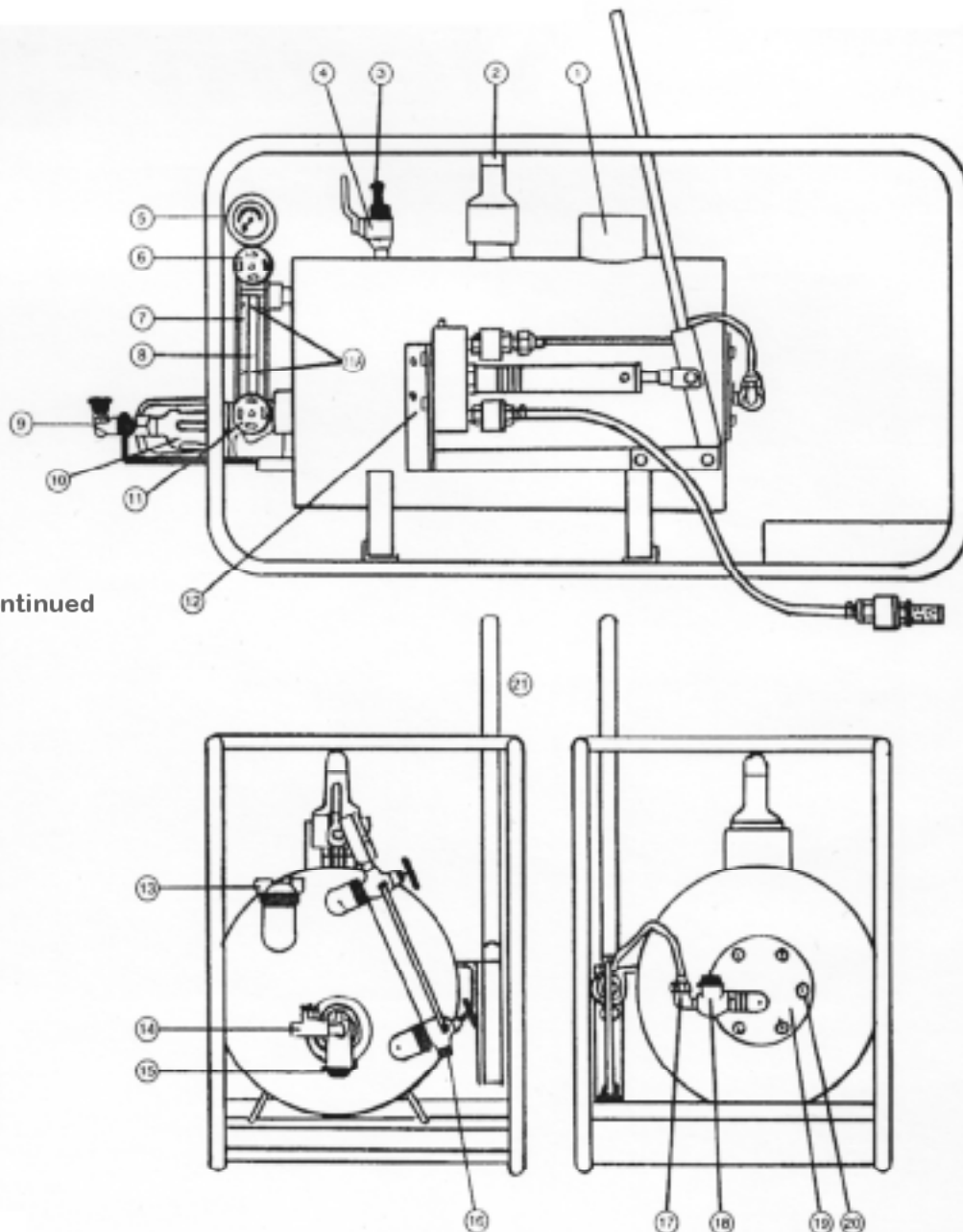
Capacity of PP23 ANG-TINA: 23 KG dry saturated steam per hour = 15,000 KCAL.

www.steamjohnny.com

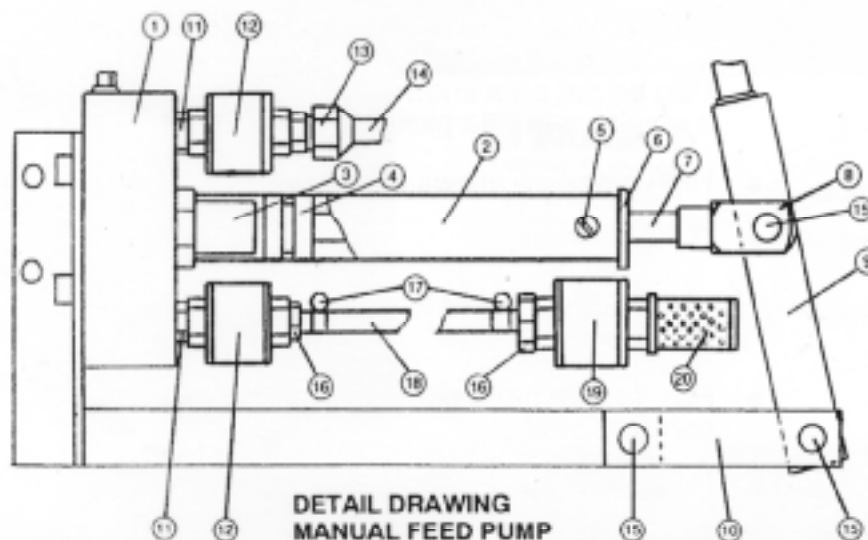
Steam Johnny

Model PP23 ANG-TINA

- 01 Exhaust pipe
- 02 Safety release 115lbs
- 03 Male quick coupler
- 04 Regulator valve
- 05 Pressure gauge
- 06 Upper water level valve
- 07 Protective casing with safety glass
- 08 Water level glass 175 X 10 w/packings
- 09 Gas burner with ignition safety device
- 10 ~~Vaporization coil~~
liquid or gas burner discontinued
- 11 Lower water level valve
- 11A High & low water levels
- 12 Compl. manual feed pump, see spec.
- 13 Manual filling cap & packing
- 14 Propane shut off valve
- 15 Angle bracket burner
- 16 Cleaning plug
- 17 Hexagonal screw nut for airing of manual pump
- 18 Non-return valve w/ metal gasket conn. 10
- 19 Access for cleaning with packing
- 20 Bolt M10 X 25
- 21 Pump handle for manual pump



www.steamjohnny.com



- 01 Pump housing
- 02 Pump cylinder
- 03 Control Pump piston
- 04 Pump piston
- 05 Lockable pump cap M6X8
- 06 Pump cap
- 07 Pump rod
- 08 Fork link
- 09 Toggle rod
- 10 Toggle links, 2
- 11 Nipple, conn. 10, 2
- 12 Spring-loaded non-return valve, conn. 10, 2
- 13 Joint for copper pipe 10 X 9.5
- 14 Copper pipe 9.5 mm X 450 mm
- 15 Pin w/split cotter and washer, 3
- 16 Hose coupling conn. 10 X 10 mm
- 17 Hose clamp
- 18 Suction hose 1.5 m
- 19 Hose coupling conn. 15 X 10 mm
- 20 Suction filter conn. 15